

# Natural Values Atlas Report

*Authoritative, comprehensive information on Tasmania's natural values.*

Report number: 41691

Reference: Anchor Mine Plan

Requested For: Russell Fulton

Timestamp: 05:29:41 PM Monday 07 March 2011

Threatened Flora: buffers 500m and 5000m

Threatened Fauna: buffers 500m and 5000m

Conservation Significance Flora: Not requested

Conservation Significance Fauna: Not requested

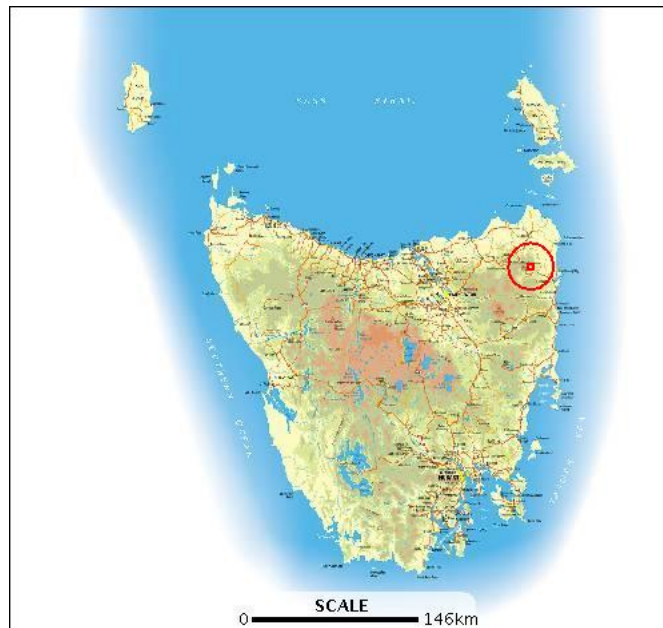
Weeds: buffers 500m and 5000m

TasVeg: buffer 1000m

Threatened Non-Forest: buffer 1000m

Geoconservation: buffer 1000m

Tasmanian Reserve Estate: buffer 1000m



The centroid for this query GDA94 584982,5435406 falls within:

1:25000 Map: 5843 BLUE TIER

Property: 2542305 LEHNERS RIDGE ROAD,  
LOTTAH TAS 7216

## Threatened flora within 500 metres

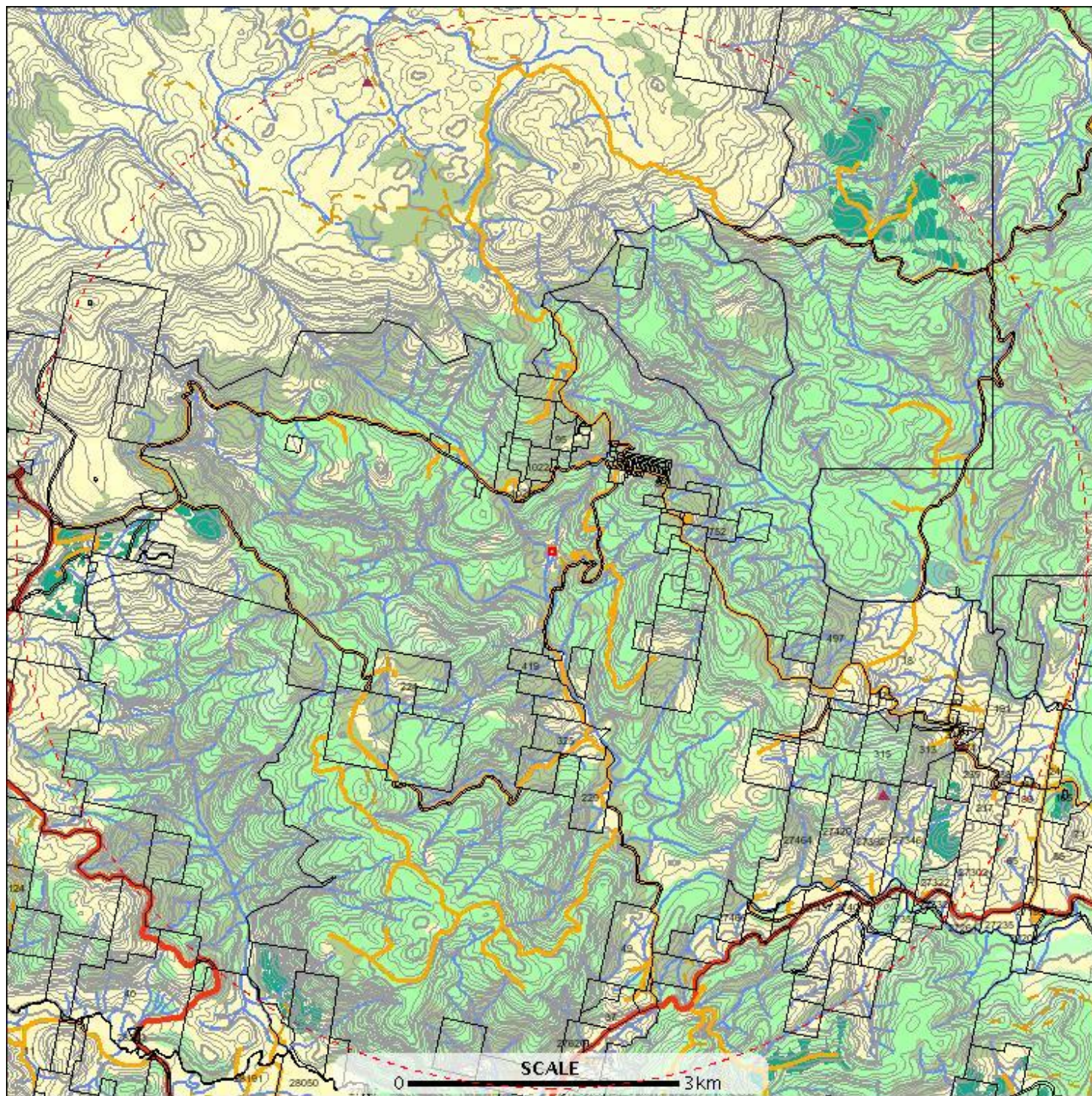
\*\*\* No threatened flora found within 500 metres. \*\*\*



## Threatened flora within 5000 metres

E: 579882  
N: 5440506

E: 590081  
N: 5440506



E: 579882  
N: 5430306

E: 590081  
N: 5430306



## Threatened flora within 5000 metres

	Threatened Flora Observations		Tall Native Eucalypt Forest		Arterial Road
	Place Names		Low Native Eucalypt Forest		Feeder
	Relief Names		Non-Forest		Access Road
	Major Rivers		Contours		Forestry
	Other Rivers		Index		Vehicular Track
	Water Body		Intermediate		Cadastral Parcels
	Estuaries		Depression Index		
	Sea		Depression Intermediate		
	Forest Groups		Land		
	Hardwood Plantation		Road Centrelines		
	Softwood Plantation		National/State Highway		
	Other Native Forest		Major Arterial Road		
(cont)			(cont)		

## Threatened flora within 5000 metres

ID	Species	Common Name	SS	NS	Observers	Date	Obs Type	Location (GDA94)
987066	Bunodophoron notatum		e		A Simson (2776)	01-Jan-1875		588085,5433126 +/- 10000m.
929239	Hierochloe rariflora	cane holygrass	r		A Simson (2776)	01-Nov-1876		588085,5433126 +/- 1500m.
230597	Plantago debilis	shade plantain	r		A. Simson (3720)	Apr-1876		588812,5433583 +/- 2000m.
149053	Scleranthus brockiei	mountain knawel	r		Karen Johnson (1435)	14-Mar-1996?		583262,5439783 +/- 100m.
929404	Senecio squarrosus	leafy fireweed	r		A Simson (2776)	01-Dec-1876		588085,5433126 +/- 1500m.
230610	Senecio velleioides	forest groundsel	r		- Unknown (21598)	01-Jan-1600?		588812,5433583 +/- 2000m.

For more information about threatened species, please contact the Manager, Threatened Species Section.

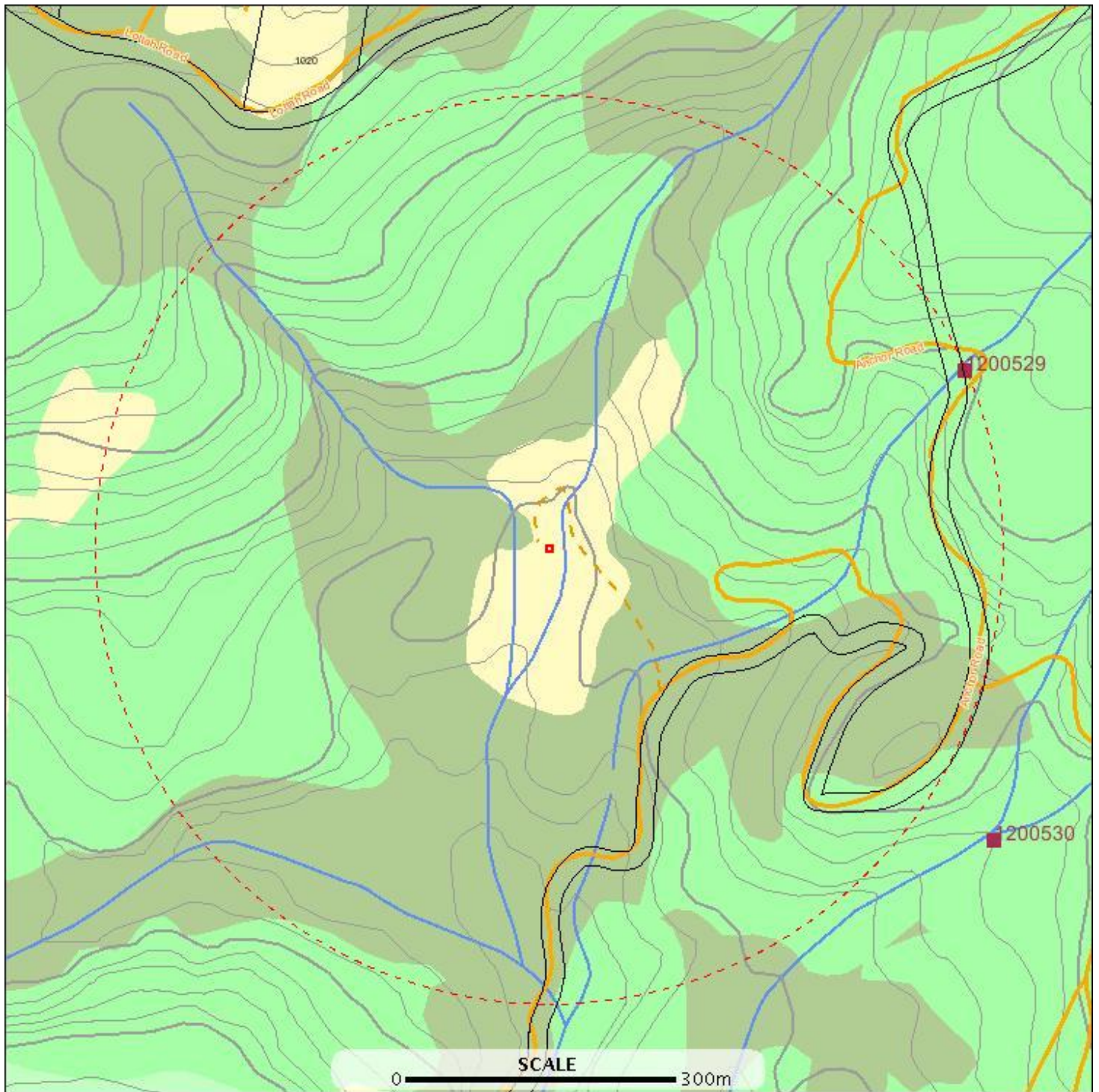
Telephone: (03) 6233 8759

Email: [ThreatenedSpecies.Enquiries@dpipwe.tas.gov.au](mailto:ThreatenedSpecies.Enquiries@dpipwe.tas.gov.au)

## Threatened fauna within 500 metres

E: 584382  
N: 5436006

E: 585581  
N: 5436006



E: 584382  
N: 5434806

E: 585581  
N: 5434806

## Threatened fauna within 500 metres



## Threatened fauna within 500 metres

ID	Species	Common Name	SS	NS	Observers	Date	Obs Type	Location (GDA94)
1200529	Beddomeia tasmanica	hydrobiid snail (terrys creek)	r		Karen Richards (3464)	01-Nov-2001		585440,5435602 +/- 100m.

## Threatened fauna within 500 metres (based on Habitat Mapping)

Species	Common Name	SS	NS	Potential	Known	Core
Aquila audax subsp. fleayi	wedge-tailed eagle	e	EN	1	0	0
Aquila audax	wedge-tailed eagle	pe	PEN	1	0	0
Perameles gunnii	eastern barred bandicoot		VU	1	0	0
Hoplogonus simsoni	simson's stag beetle	v	VU	1	0	0
Lathamus discolor	swift parrot	e	EN	1	0	0
Tyto novaehollandiae	masked owl	pe	PVU	1	0	0
Litoria raniformis	green and golden frog	v	VU	1	0	0
Accipiter novaehollandiae	grey goshawk	e		1	0	1
Haliaeetus leucogaster	white-bellied sea-eagle	v		1	0	0

For more information about threatened species, please contact the Manager, Threatened Species Section.

Telephone: (03) 6233 8759

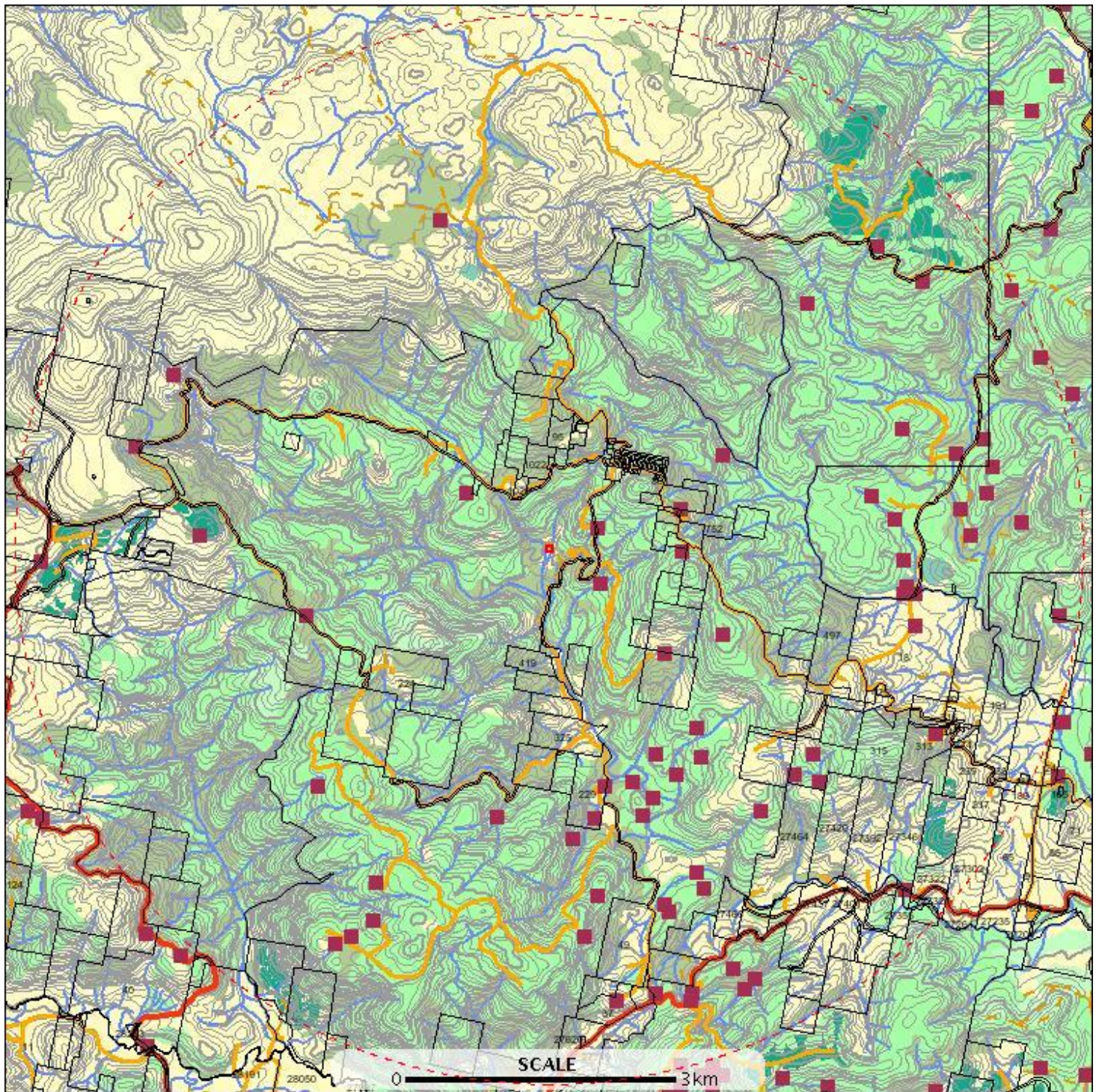
Email: [ThreatenedSpecies.Enquiries@dpipwe.tas.gov.au](mailto:ThreatenedSpecies.Enquiries@dpipwe.tas.gov.au)



## Threatened fauna within 5000 metres

E: 579882  
N: 5440506

E: 590081  
N: 5440506



E: 579882  
N: 5430306

E: 590081  
N: 5430306



## Threatened fauna within 5000 metres

	Threatened Fauna Observations		Tall Native Eucalypt Forest		Arterial Road
	Place Names		Low Native Eucalypt Forest		Feeder
	Relief Names		Non-Forest		Access Road
	Major Rivers		Contours		Forestry
	Other Rivers		Index		Vehicular Track
	Water Body		Intermediate		Cadastral Parcels
	Estuaries		Depression Index		
	Sea		Depression Intermediate		
	Forest Groups		Land		
	Hardwood Plantation		Road Centrelines		
	Softwood Plantation		National/State Highway		
	Other Native Forest		Major Arterial Road		
(cont)		(cont)			

## Threatened fauna within 5000 metres

ID	Species	Common Name	SS	NS	Observers	Date	Obs Type	Location (GDA94)
878186	Accipiter novaehollandiae	grey goshawk	e		Darryel Binns (6900)	11-Apr-1992?		588612,5433683 +/- 100m.
950073	Aquila audax subsp. fleayi	wedge-tailed eagle	e	EN	Willem Mulder (7228)	20-Jul-2006	nest	585207,5432702 +/- 0m.
1200534	Beddomeia tasmanica	hydrobiid snail (terrys creek)	r		Karen Richards (3464)	06-Nov-2001		588797,5436298 +/- 100m.
1200529	Beddomeia tasmanica	hydrobiid snail (terrys creek)	r		Karen Richards (3464)	01-Nov-2001		585440,5435602 +/- 100m.
1200531	Beddomeia tasmanica	hydrobiid snail (terrys creek)	r		Karen Richards (3464)	03-Nov-2001		584496,5432900 +/- 100m.
1200527	Beddomeia tasmanica	hydrobiid snail (terrys creek)	r		Karen Richards (3464)	30-Oct-2001		581107,5436364 +/- 100m.
1200528	Beddomeia tasmanica	hydrobiid snail (terrys creek)	r		Karen Richards (3464)	31-Oct-2001		581466,5437038 +/- 100m.
1200532	Beddomeia tasmanica	hydrobiid snail (terrys creek)	r		Karen Richards (3464)	04-Nov-2001		586172,5433290 +/- 100m.
1200530	Beddomeia tasmanica	hydrobiid snail (terrys creek)	r		Karen Richards (3464)	02-Nov-2001		585472,5435085 +/- 100m.
1200535	Beddomeia tasmanica	hydrobiid snail (terrys creek)	r		Karen Richards (3464)	07-Nov-2001		587277,5433302 +/- 100m.
1200533	Beddomeia tasmanica	hydrobiid snail (terrys creek)	r		Karen Richards (3464)	05-Nov-2001		586363,5432379 +/- 100m.
1200536	Beddomeia tasmanica	hydrobiid snail (terrys creek)	r		Karen Richards (3464)	08-Nov-2001		585991,5431247 +/- 100m.
1154867	Dasyurus maculatus	spotted-tailed quoll	r	VU	Erin Flynn (19574)	08-Oct-2008		585765,5433232 +/- 0m.
900834	Dasyurus maculatus subsp. maculatus	spotted-tailed quoll	r	VU	Greg Hocking (7572)	25-May-1985?		586212,5435783 +/- 10000m.
741919	Dasyurus maculatus subsp. maculatus	spotted-tailed quoll	r	VU	Greg Hocking (7572)	11-Sep-1992		588325,5432222 +/- 1617m.
593608	Hoplogonus simsoni	simson's stag beetle	v	VU	- Unknown (21598)	01-Jan-1600?		583962,5438483 +/- 250m.
352548	Hoplogonus simsoni	simson's stag beetle	v	VU	Jeff Meggs (1338)	01-Jan-1996?		583962,5438483 +/- 100m.
1076273	Hoplogonus simsoni	simson's stag beetle	v	VU	Karen Richards (3464)	12-Jan-2000		582712,5434783 +/- 100m.
1076275	Hoplogonus simsoni	simson's stag beetle	v	VU	Karen Richards (3464)	12-Jan-2000		582812,5433183 +/- 100m.
1076277	Hoplogonus simsoni	simson's stag beetle	v	VU	Karen Richards (3464)	13-Jan-2000		581712,5435533 +/- 100m.
1076236	Hoplogonus simsoni	simson's stag beetle	v	VU	Jeff Meggs (1338)	06-May-1997		589762,5434783 +/- 100m.
593605	Hoplogonus simsoni	simson's stag beetle	v	VU	Jeff Meggs (1338)	05-May-1997		589762,5434783 +/- 100m.
602487	Hoplogonus simsoni	simson's stag beetle	v	VU	Jeff Meggs (1338)	02-Jun-1998		589312,5437833 +/- 100m.
602516	Hoplogonus simsoni	simson's stag beetle	v	VU	Jeff Meggs (1338)	02-Jul-1998?		589312,5437833 +/- 100m.
593649	Hoplogonus simsoni	simson's stag beetle	v	VU	Jeff Meggs (1338)	02-Jun-1998		589587,5437208 +/- 100m.
593664	Hoplogonus simsoni	simson's stag beetle	v	VU	Jeff Meggs (1338)	02-Jul-1998?		589587,5437208 +/- 100m.
845957	Hoplogonus simsoni	simson's stag beetle	v	VU	Jeff Meggs (1338)	01-Nov-1992?		588837,5435783 +/- 100m.
593715	Hoplogonus simsoni	simson's stag beetle	v	VU	- Unknown (21598)	30-Nov-1996		588837,5435783 +/- 100m.
1076241	Hoplogonus simsoni	simson's stag beetle	v	VU	Jeff Meggs (1338)	01-Dec-1996		588837,5435783 +/- 100m.
602511	Hoplogonus simsoni	simson's stag beetle	v	VU	Jeff Meggs (1338)	04-Jun-1998?		588937,5435533 +/- 100m.
593659	Hoplogonus simsoni	simson's stag beetle	v	VU	Jeff Meggs (1338)	03-Jun-1998?		589062,5436433 +/- 100m.
602577	Hoplogonus simsoni	simson's stag beetle	v	VU	- Unknown (21598)	30-Nov-1996		589087,5435933 +/- 100m.
845958	Hoplogonus simsoni	simson's stag beetle	v	VU	Jeff Meggs (1338)	01-Nov-1992?		589087,5435933 +/- 100m.
1076242	Hoplogonus simsoni	simson's stag beetle	v	VU	Jeff Meggs (1338)	01-Dec-1996		589087,5435933 +/- 100m.
602513	Hoplogonus simsoni	simson's stag beetle	v	VU	Jeff Meggs (1338)	03-Jun-1998?		589137,5436183 +/- 100m.
602518	Hoplogonus simsoni	simson's stag beetle	v	VU	Jeff Meggs (1338)	04-Jun-1998?		589412,5435658 +/- 100m.
1076248	Hoplogonus simsoni	simson's stag beetle	v	VU	Jeff Meggs (1338)	26-Nov-1996		588312,5435308 +/- 100m.
593716	Hoplogonus simsoni	simson's stag beetle	v	VU	- Unknown (21598)	25-Nov-1996		588312,5435308 +/- 100m.
1076246	Hoplogonus simsoni	simson's stag beetle	v	VU	Jeff Meggs (1338)	23-Jan-1997		588012,5435908 +/- 100m.
593604	Hoplogonus simsoni	simson's stag beetle	v	VU	- Unknown (21598)	22-Jan-1997		588012,5435908 +/- 100m.
1076247	Hoplogonus simsoni	simson's stag beetle	v	VU	Jeff Meggs (1338)	07-Feb-1997		588487,5437908 +/- 100m.
602435	Hoplogonus simsoni	simson's stag beetle	v	VU	Jeff Meggs (1338)	06-Feb-1997		588487,5437908 +/- 100m.
1076245	Hoplogonus simsoni	simson's stag beetle	v	VU	Jeff Meggs (1338)	12-Feb-1997		588287,5436533 +/- 100m.



## Threatened fauna within 5000 metres

ID	Species	Common Name	SS	NS	Observers	Date	Obs Type	Location (GDA94)
602434	Hoplogonus simsoni	simson's stag beetle	v	VU	Jeff Meggs (1338)	11-Feb-1997		588287,5436533 +/- 100m.
360736	Hoplogonus simsoni	simson's stag beetle	v	VU	- Unknown (21598)	14-Nov-1996?		588412,5434983 +/- 100m.
593714	Hoplogonus simsoni	simson's stag beetle	v	VU	- Unknown (21598)	30-Nov-1996		588337,5435058 +/- 100m.
593652	Hoplogonus simsoni	simson's stag beetle	v	VU	Jeff Meggs (1338)	01-Dec-1996?		588337,5435058 +/- 100m.
1076274	Hoplogonus simsoni	simson's stag beetle	v	VU	Karen Richards (3464)	11-Jan-2000		588062,5438233 +/- 100m.
849521	Hoplogonus simsoni	simson's stag beetle	v	VU	D Cowrie (7231)	01-Jan-1972?		588412,5434683 +/- 100m.
602486	Hoplogonus simsoni	simson's stag beetle	v	VU	Jeff Meggs (1338)	16-Jul-1998?		587412,5437708 +/- 100m.
602484	Hoplogonus simsoni	simson's stag beetle	v	VU	Jeff Meggs (1338)	17-Jul-1998?		586612,5434608 +/- 100m.
1076238	Hoplogonus simsoni	simson's stag beetle	v	VU	Jeff Meggs (1338)	28-Nov-1996		586237,5435383 +/- 100m.
602451	Hoplogonus simsoni	simson's stag beetle	v	VU	- Unknown (21598)	27-Nov-1996		586237,5435383 +/- 100m.
858004	Hoplogonus simsoni	simson's stag beetle	v	VU	D Cowrie (7231)	01-Jan-1972?		586612,5436283 +/- 100m.
1076276	Hoplogonus simsoni	simson's stag beetle	v	VU	Karen Richards (3464)	04-Jan-2000		584212,5435933 +/- 100m.
593650	Hoplogonus simsoni	simson's stag beetle	v	VU	Jeff Meggs (1338)	11-Jun-1998?		587462,5433483 +/- 100m.
602489	Hoplogonus simsoni	simson's stag beetle	v	VU	Jeff Meggs (1338)	11-Jun-1998?		587512,5433233 +/- 100m.
858003	Hoplogonus simsoni	simson's stag beetle	v	VU	D Cowrie (7231)	01-Jan-1972?		585512,5433183 +/- 100m.
1084120	Hoplogonus simsoni	simson's stag beetle	v	VU	Jeff Meggs (1338)	1996		585962,5433083 +/- 100m.
593611	Hoplogonus simsoni	simson's stag beetle	v	VU	- Unknown (21598)	01-Jan-1600?		585962,5433083 +/- 200m.
602525	Hoplogonus simsoni	simson's stag beetle	v	VU	Jeff Meggs (1338)	01-Jun-1998?		585312,5431783 +/- 100m.
1084122	Hoplogonus simsoni	simson's stag beetle	v	VU	Jeff Meggs (1338)	04-Mar-2003		586112,5432008 +/- 100m.
602453	Hoplogonus simsoni	simson's stag beetle	v	VU	Jeff Meggs (1338)	06-May-1998?		586112,5432008 +/- 100m.
593609	Hoplogonus simsoni	simson's stag beetle	v	VU	- Unknown (21598)	01-Jan-1600?		586062,5432083 +/- 100m.
1084119	Hoplogonus simsoni	simson's stag beetle	v	VU	Jeff Meggs (1338)	1996		586062,5432083 +/- 100m.
602547	Hoplogonus simsoni	simson's stag beetle	v	VU	Jeff Meggs (1338)	07-May-1998?		585437,5432158 +/- 100m.
602483	Hoplogonus simsoni	simson's stag beetle	v	VU	Jeff Meggs (1338)	05-May-1998?		586437,5432233 +/- 100m.
593712	Hoplogonus simsoni	simson's stag beetle	v	VU	Jeff Meggs (1338)	06-May-1998?		585862,5432908 +/- 100m.
602485	Hoplogonus simsoni	simson's stag beetle	v	VU	Jeff Meggs (1338)	10-Jun-1998?		586962,5432958 +/- 100m.
602550	Hoplogonus simsoni	simson's stag beetle	v	VU	Jeff Meggs (1338)	02-Jun-1998?		585612,5431183 +/- 100m.
602578	Hoplogonus simsoni	simson's stag beetle	v	VU	Jeff Meggs (1338)	09-Jun-1998?		585987,5433483 +/- 100m.
602450	Hoplogonus simsoni	simson's stag beetle	v	VU	Jeff Meggs (1338)	24-Feb-1997		586062,5434433 +/- 100m.
1076237	Hoplogonus simsoni	simson's stag beetle	v	VU	Jeff Meggs (1338)	25-Feb-1997		586062,5434433 +/- 100m.
602458	Hoplogonus simsoni	simson's stag beetle	v	VU	Jeff Meggs (1338)	09-Jun-1998?		586362,5433733 +/- 100m.
602463	Hoplogonus simsoni	simson's stag beetle	v	VU	Jeff Meggs (1338)	09-Jun-1998?		586412,5433458 +/- 100m.
593610	Hoplogonus simsoni	simson's stag beetle	v	VU	- Unknown (21598)	01-Feb-1997		582987,5431708 +/- 200m.
593651	Hoplogonus simsoni	simson's stag beetle	v	VU	Jeff Meggs (1338)	04-Mar-1998?		583137,5431783 +/- 100m.
593656	Hoplogonus simsoni	simson's stag beetle	v	VU	Jeff Meggs (1338)	04-Mar-1998?		583337,5431933 +/- 100m.
602515	Hoplogonus simsoni	simson's stag beetle	v	VU	Jeff Meggs (1338)	27-May-1998?		583362,5432283 +/- 100m.
749160	Perameles gunnii	eastern barred bandicoot		VU	Greg Hocking (7572)	11-Sep-1992		580227,5435294 +/- 736m.
749213	Sarcophilus harrisii	tasmanian devil	e	EN	Greg Hocking (7572)	26-Jan-1993		586328,5431243 +/- 305m.
854571	Tasmanipatus barretti	giant velvet worm	r		Robert Mesibov (2149)	25-Aug-1983?		588312,5434983 +/- 100m.
845891	Tasmanipatus barretti	giant velvet worm	r		Robert Mesibov (2149)	23-Oct-1986?		585412,5432883 +/- 100m.
845919	Tasmanipatus barretti	giant velvet worm	r		Robert Mesibov (2149)	01-Jan-1600?		586912,5431383 +/- 100m.
845896	Tasmanipatus barretti	giant velvet worm	r		Robert Mesibov (2149)	01-Jan-1600?		586312,5431183 +/- 100m.
845917	Tasmanipatus barretti	giant velvet worm	r		Robert Mesibov (2149)	01-Jan-1600?		586712,5431483 +/- 100m.
854541	Tasmanipatus barretti	giant velvet worm	r		Robert Mesibov (2149)	01-Jan-1600?		586812,5431283 +/- 100m.
854572	Tasmanipatus barretti	giant velvet worm	r		Robert Mesibov (2149)	26-Aug-1983?		588312,5434983 +/- 100m.

## Threatened fauna within 5000 metres

ID	Species	Common Name	SS	NS	Observers	Date	Obs Type	Location (GDA94)
1200807	Tasmanipatus barretti	giant velvet worm	r		Karen Richards (3464)	2000		588230,5435683 +/- 100m.
524038	Tasmanipatus barretti	giant velvet worm	r		David Horner (3455)	1998		586212,5430583 +/- 100m.

### Threatened fauna within 5000 metres (based on Habitat Mapping)

Species	Common Name	SS	NS	Potential	Known	Core
Aquila audax subsp. fleayi	wedge-tailed eagle	e	EN	1	0	0
Aquila audax	wedge-tailed eagle	pe	PEN	1	0	0
Perameles gunnii	eastern barred bandicoot		VU	1	0	0
Hoplogonus simsoni	simson's stag beetle	v	VU	1	0	0
Lathamus discolor	swift parrot	e	EN	1	0	0
Tasmanipatus barretti	giant velvet worm	r		1	0	0
Galaxiella pusilla	eastern dwarf galaxias	v	VU	1	1	0
Tyto novaehollandiae	masked owl	pe	PVU	1	0	1
Litoria raniformis	green and golden frog	v	VU	1	0	0
Accipiter novaehollandiae	grey goshawk	e		1	0	1
Haliaeetus leucogaster	white-bellied sea-eagle	v		1	0	0

For more information about threatened species, please contact the Manager, Threatened Species Section.

Telephone: (03) 6233 8759

Email: [ThreatenedSpecies.Enquiries@dpipwe.tas.gov.au](mailto:ThreatenedSpecies.Enquiries@dpipwe.tas.gov.au)

## Weeds within 500 m

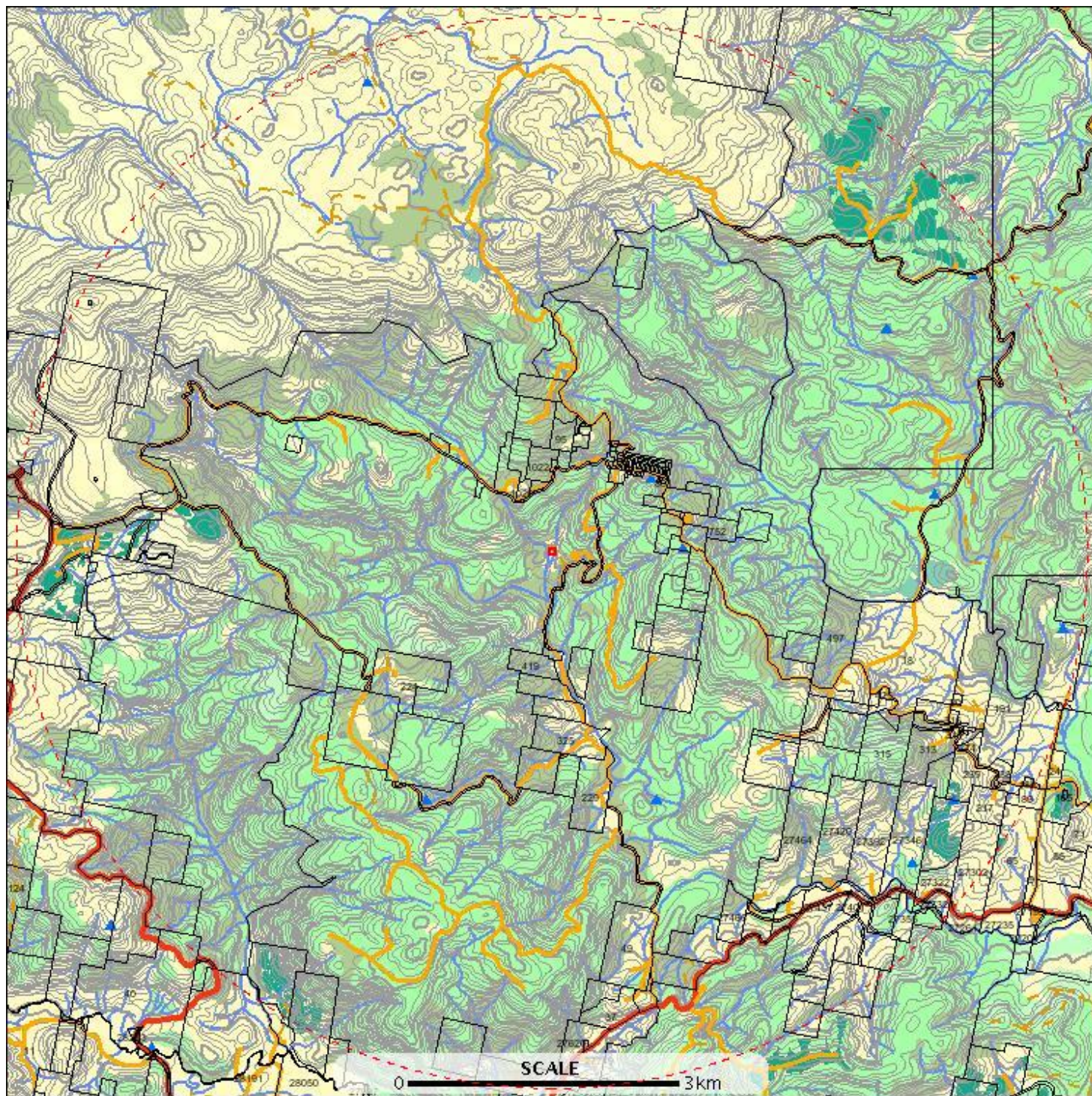
\*\*\* No weeds found within 500 metres. \*\*\*



## Weeds within 5000 m

E: 579882  
N: 5440506

E: 590081  
N: 5440506



E: 579882  
N: 5430306

E: 590081  
N: 5430306



## Weeds within 5000 m

	Weeds Watchlist		Low Native Eucalypt Forest		Access Road
	Place Names		Non-Forest		Forestry
	Relief Names		Contours		Vehicular Track
	Major Rivers		Index		Cadastral Parcels
	Other Rivers		Intermediate		
	Water Body		Depression Index		
	Estuaries		Depression Intermediate		
	Sea		Land		
	Forest Groups		Road Centrelines		
	Hardwood Plantation		National/State Highway		
	Softwood Plantation		Major Arterial Road		
	Other Native Forest		Arterial Road		
	Tall Native Eucalypt Forest		Feeder		
(cont)		(cont)			

## Weeds within 5000 m

ID	Species	Common Name	Observers	Date	Geometry	Location	Obs State	WMA	Wons Density	Data Source
243783	Cotoneaster franchetii	grey cotoneaster	Andrew Rozefelds (2777)	03-Jun-1997	588112,5437483 +/- 100m.	West Tamar Highway, north of junction with Batman Highway	Present	Yes		
77331	Digitalis purpurea	foxglove	David Ziegeler (7381)	18-Nov-1998?	588912,5437983 +/- 100m.		Present	Yes		
148876	Digitalis purpurea	foxglove	Karen Johnson (1435)	14-Mar-1996?	583262,5439783 +/- 100m.		Present	Yes		
912244	Erica lusitanica	spanish heath	C Williams (6064), T Dudley (6065)	26-Feb-1997	585073,5430455 +/- 100m.		Present	Yes		
911406	Erica lusitanica	spanish heath	C Williams (6064), T Dudley (6065)	26-Feb-1997	585007,5430414 +/- 100m.		Present	Yes		
912245	Erica lusitanica	spanish heath	C Williams (6064), T Dudley (6065)	26-Feb-1997	585145,5430574 +/- 100m.		Present	Yes		
243407	Leucanthemum vulgare	oxeye daisy	A. Simson (3720)	1879	583812,5433083 +/- 20000m.	Thomas Plains	Present	Yes		
911086	Leycesteria formosa	himalayan honeysuckle	Tim Rudman (2416)	13-Jan-2000	588352,5432193 +/- 50m.		Present	Yes		
911862	Rosa rubiginosa	sweet briar	Tim Rudman (2416)	13-Jan-2000	588352,5432193 +/- 50m.		Present	Yes		
12439	Rubus fruticosus	blackberry	Mark Wapstra (1621)	26-Mar-1996?	586212,5435433 +/- 100m.		Present	Yes		
77335	Rubus fruticosus	blackberry	David Ziegeler (7381)	18-Nov-1998?	588912,5437983 +/- 100m.		Present	Yes		
12410	Rubus fruticosus	blackberry	Mark Wapstra (1621)	26-Mar-1996?	585912,5436083 +/- 100m.		Present	Yes		
12356	Rubus fruticosus	blackberry	Mark Wapstra (1621)	25-Mar-1996?	589762,5434683 +/- 100m.		Present	Yes		
12580	Rubus fruticosus	blackberry	Mark Wapstra (1621)	12-Apr-1996?	585962,5433083 +/- 100m.		Present	Yes		
14261	Rubus fruticosus	blackberry	Mark Wapstra (1621)	25-Mar-1996?	588562,5435933 +/- 100m.		Present	Yes		
1165815	Ulex europaeus	gorse	- Unknown (21598)	01-Jan-2001	588738.439,5433080.1 329 +/- -1m.		Present	Yes	7	DPIPWE
1165901	Ulex europaeus	gorse	- Unknown (21598)	22-Jan-2003	588355.452,5432492.1 275 +/- -1m.		Present	Yes	7	DPIPWE

For more information about introduced weed species, please visit the following URL for contact details in your area.

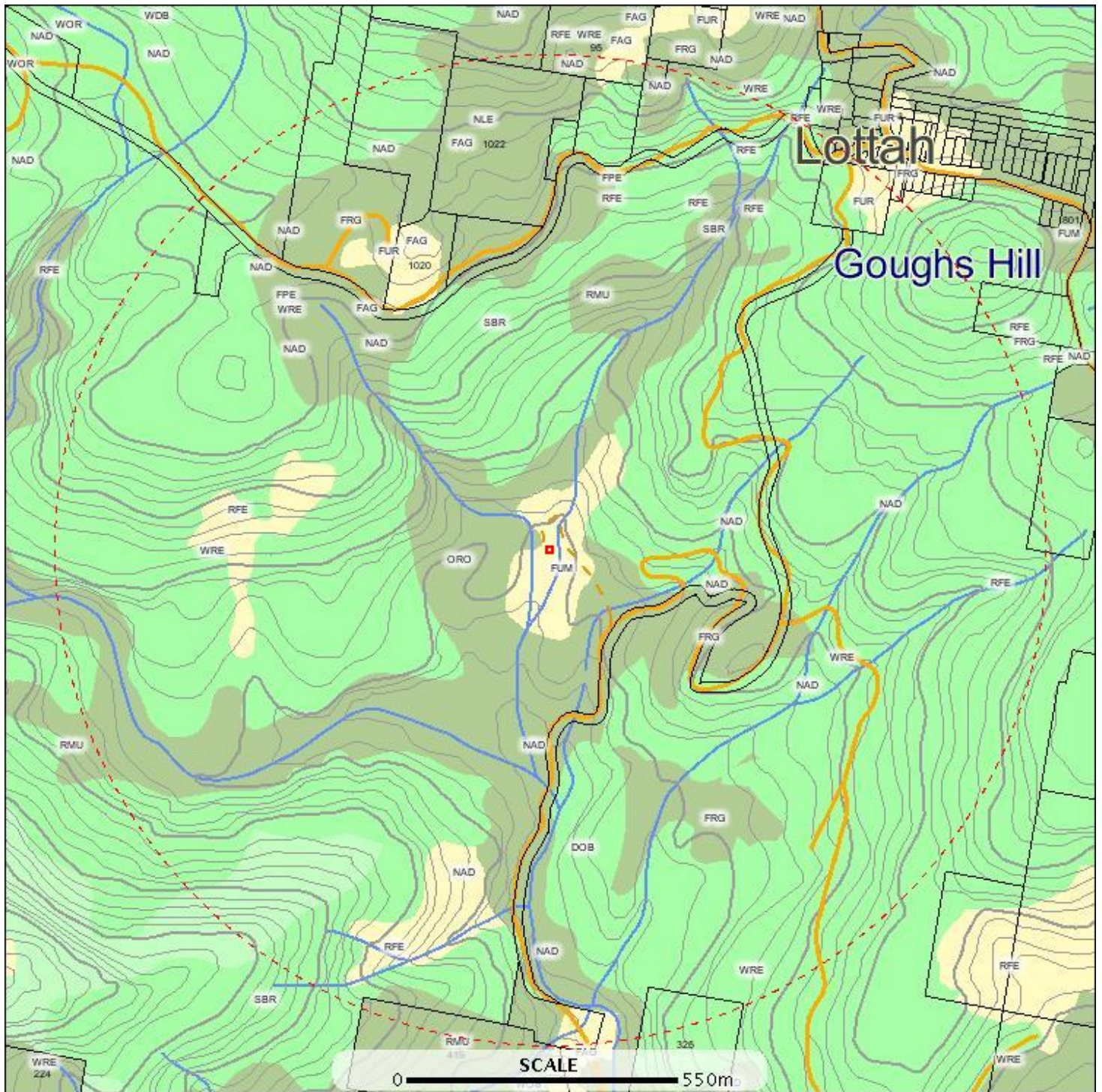
<http://www.dpiw.tas.gov.au/inter.nsf/WebPages/TPRY-52J8Z3?open>



# TASVEG communities within 1000 metres

E: 583881  
N: 5436506

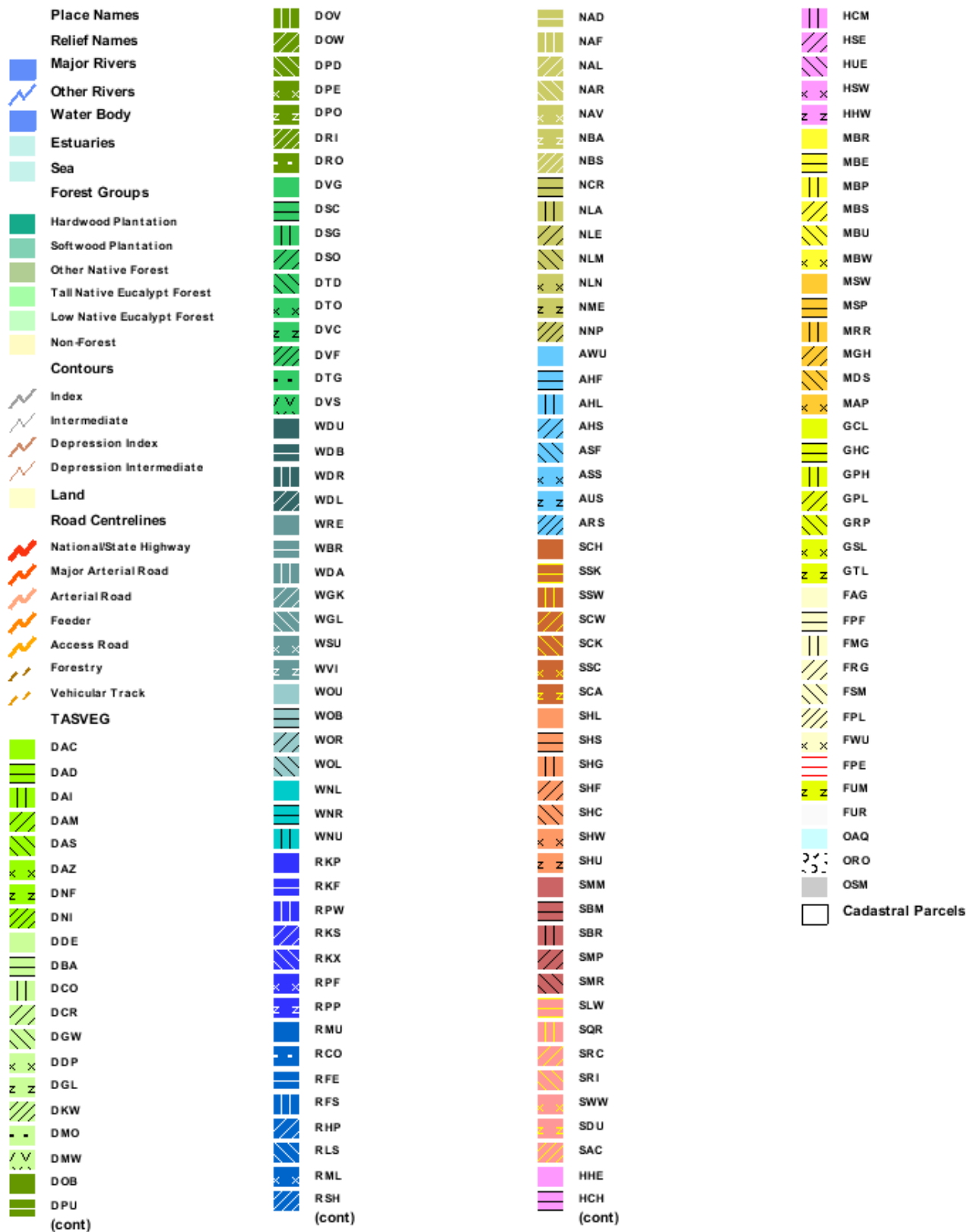
E: 586082  
N: 5436506



E: 583881  
N: 5434306

E: 586082  
N: 5434306

# TASVEG communities within 1000 metres



## TASVEG communities within 1000 metres

ID	Code	Community	Emergent Species
101521346	WOU	Eucalyptus obliqua wet forest (undifferentiated)	
101527594	FUM	Extra-urban miscellaneous	
101527609	WOU	Eucalyptus obliqua wet forest (undifferentiated)	
101527608	FUR	Urban areas	
101527597	NAD	Acacia dealbata forest	
101532289	DOB	Eucalyptus obliqua dry forest and woodland	
101532287	FAG	Agricultural land	
101527593	NAD	Acacia dealbata forest	
101527595	NAD	Acacia dealbata forest	
101527598	NAD	Acacia dealbata forest	
101527365	NAD	Acacia dealbata forest	

For more information about TASVEG maps, please contact the Coordinator, Tasmanian Vegetation Monitoring and Mapping Program.

Telephone: (03) 6233 4501

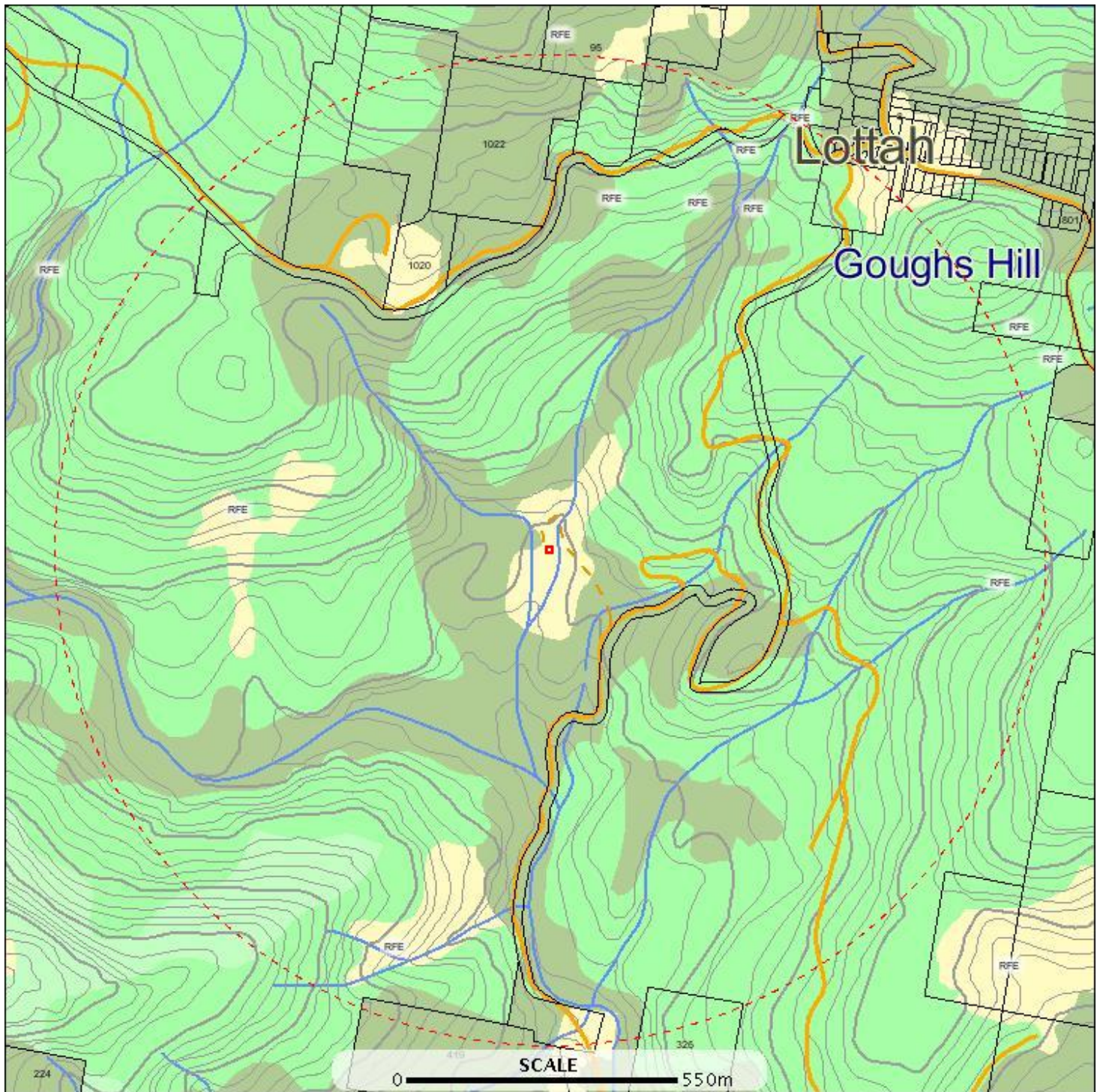
Email: [TASVEG@dpipwe.tas.gov.au](mailto:TASVEG@dpipwe.tas.gov.au)



## Threatened communities within 1000 metres

E: 583881  
N: 5436506

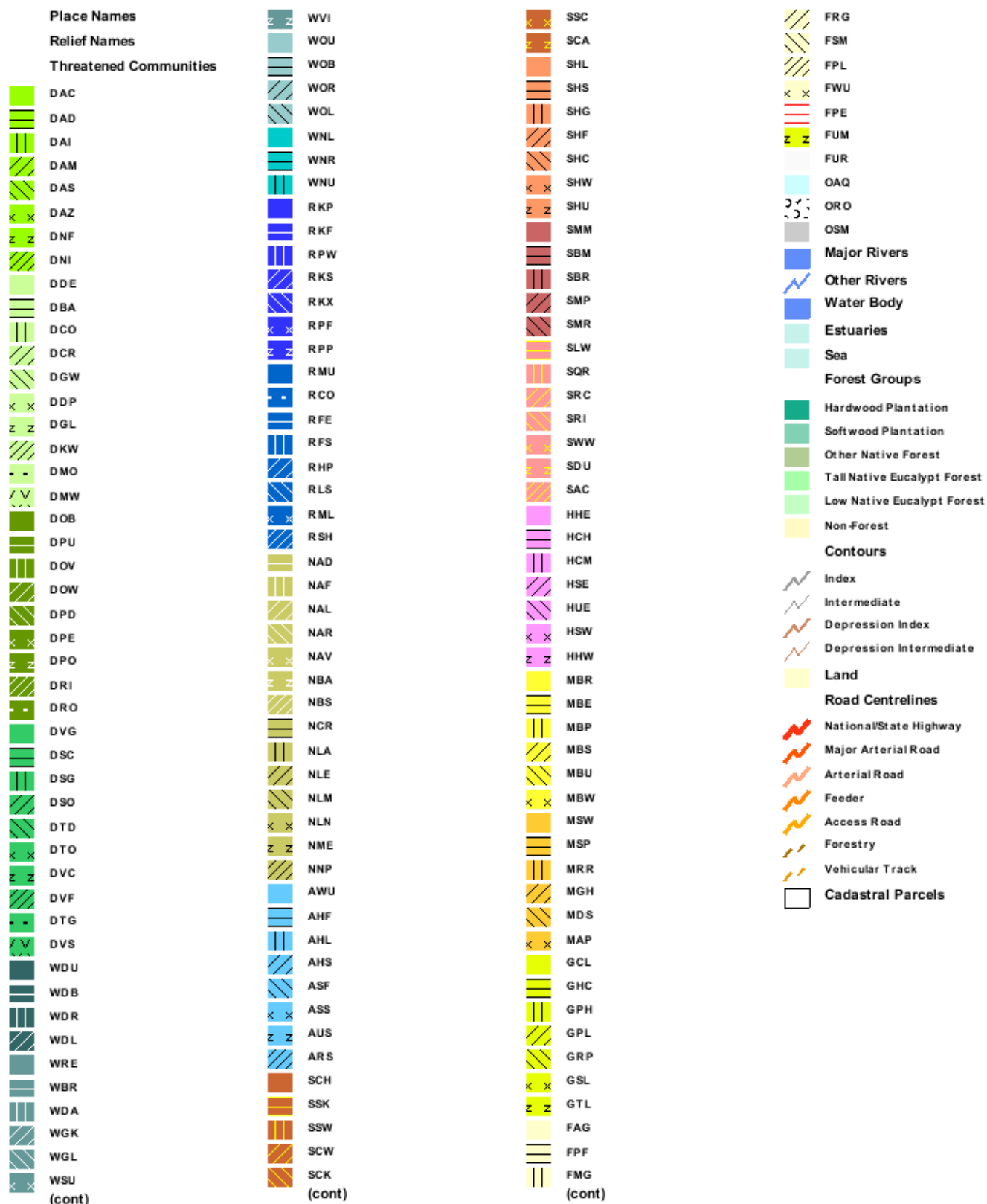
E: 586082  
N: 5436506



E: 583881  
N: 5434306

E: 586082  
N: 5434306

# Threatened communities within 1000 metres



## Threatened communities within 1000 metres

Code	Title	Status
RFE	Rainforest fernland	R
RFE	Rainforest fernland	R
RFE	Rainforest fernland	R
RFE	Rainforest fernland	R
RFE	Rainforest fernland	R
RFE	Rainforest fernland	R

For more information about threatened vegetation communities, please contact Resource Management and Conservation.

Ph: (03) 6233 4501,

Fax: (03) 6233 3186

Address: 4th Floor 134 Maquarie Street Hobart TAS 7000 Australia



## Geoconservation sites within 1000 metres

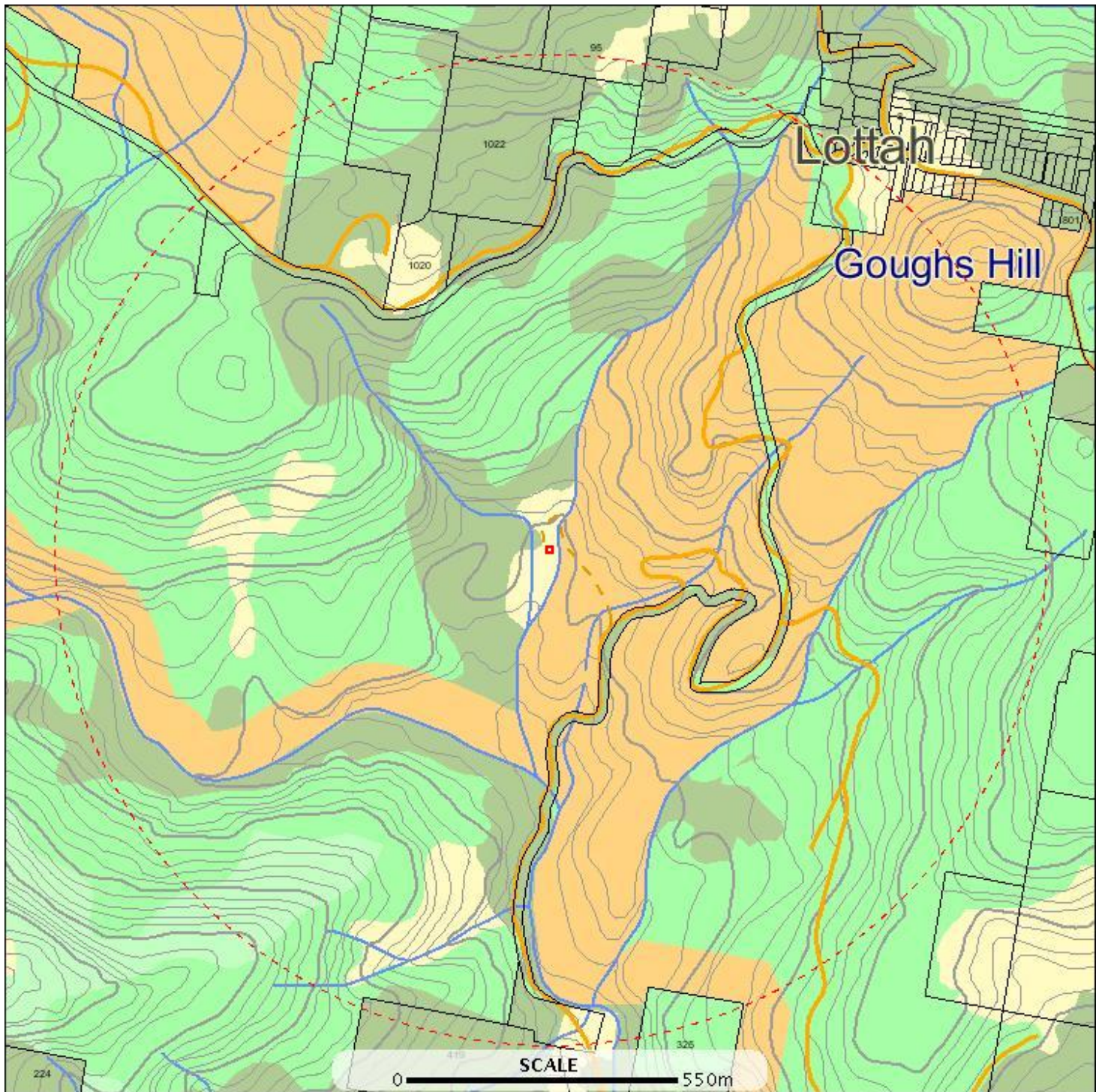
\*\*\* No Geoconservation sites found within 1000 metres. \*\*\*



## Reserve estates within 1000 metres

E: 583881  
N: 5436506

E: 586082  
N: 5436506



E: 583881  
N: 5434306

E: 586082  
N: 5434306

## Reserve estates within 1000 metres



## Reserve estates within 1000 metres

Name	Classification	Status
	Informal Reserve on State Forest or Forestry Tas managed land	Informal Reserve
	Informal Reserve on State Forest or Forestry Tas managed land	Informal Reserve
	Informal reserve on other public land	Informal Reserve

For more information about the Tasmanian Reserve Estate, please contact the Policy & Conservation Assessment Branch DPIPW.

Ph: (03) 6216 4457

Fax (03) 6223 8603

Address: GPO Box 44 Hobart TAS 7000